



VISTA ALEGRE

1824

HOTELWARE



CHEFS' COLLECTION



VISTA ALEGRE

The Vista Alegre porcelain factory was established in 1824.

Thought its history, the brand has always been associated with Portuguese history and cultural life, having acquired an unrivalled international reputation.

Vista Alegre aims to become the most prestigious brand in the world for tableware, gifts, decoration pieces, porcelain articles for hotels, crystal and glass, maintaining a strong link to design and culture.





HOTELWARE

The progressive growth of supply and demand in the hotel sector, as well as the consequent increase in the quality, have encouraged Vista Alegre to invest in this highly competitive segment, viewing tourism as an organic extension of its activity.

Always distinctive, Vista Alegre hotelware offers an excellent quality/price relation, making it an attractive choice in the medium, high and luxury segments. To this end, the brand's strong image has been closely followed by the needs of the industry, with a range of diversified ranges that combine contemporary design, technical innovation and the functional properties demanded by the best professionals, including dimension, volumetry, resistance, and ergonomics.

The global recognition, the frequent collaboration with prestige designers and the bonds created with internationally renowned chefs with which develop its hotelware collections contribute to strengthening the association of Vista Alegre with high gastronomy and ensure its presence in the main hotel groups all over the world making it the leading brand in the hotelware segment in Southern European markets.

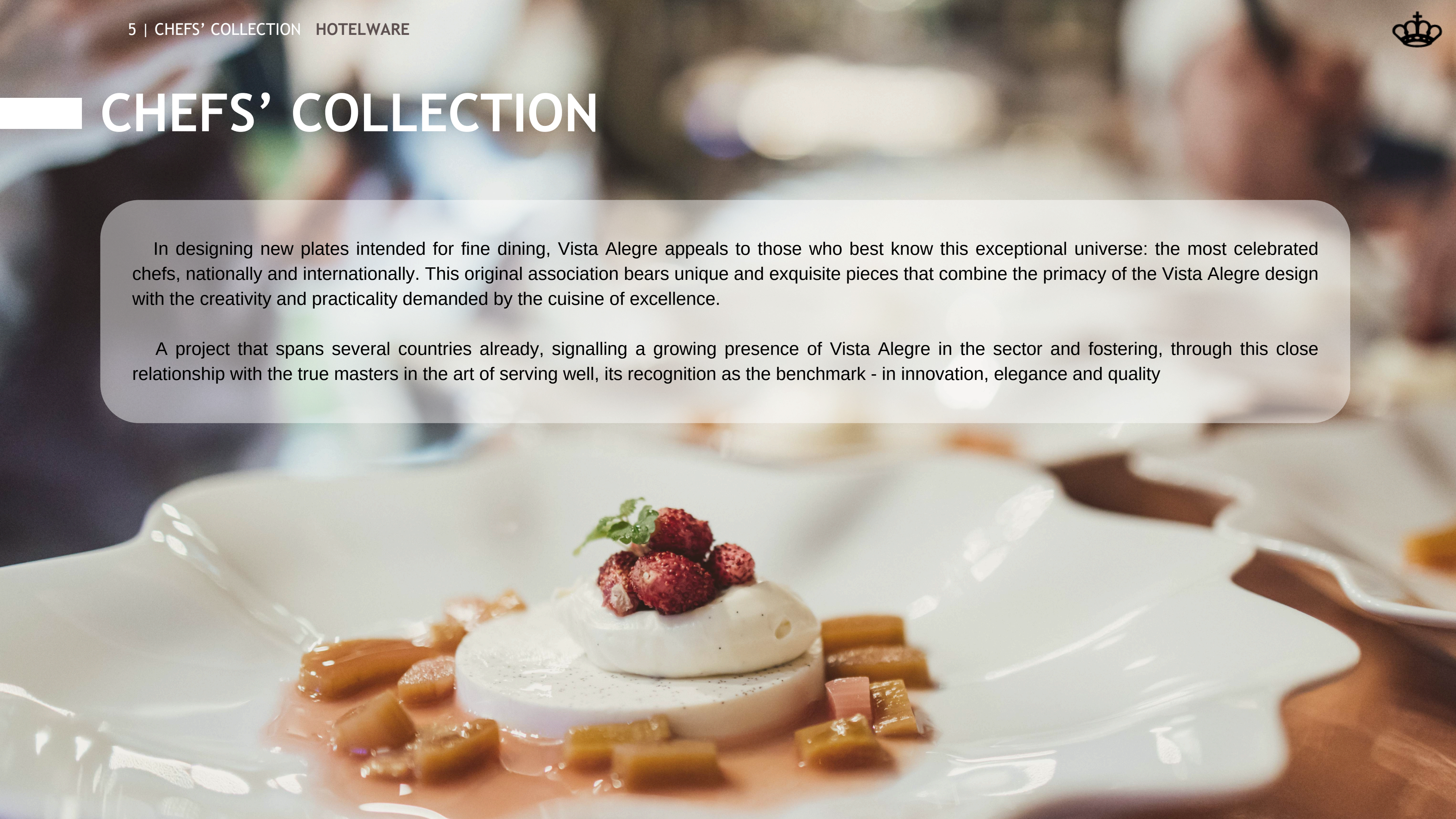




CHEFS' COLLECTION

In designing new plates intended for fine dining, Vista Alegre appeals to those who best know this exceptional universe: the most celebrated chefs, nationally and internationally. This original association bears unique and exquisite pieces that combine the primacy of the Vista Alegre design with the creativity and practicality demanded by the cuisine of excellence.

A project that spans several countries already, signalling a growing presence of Vista Alegre in the sector and fostering, through this close relationship with the true masters in the art of serving well, its recognition as the benchmark - in innovation, elegance and quality





PROCESS

It's very simple and Vista Alegre is with you to support you throughout the process:

- 1) Meeting to share ideas between Chef, Vista Alegre's marketing department and in-house design team, in order to define the format, dimensions, purpose and inspiration for the piece;
- 2) Presentation of the creative proposals developed by the Vista Alegre design team, selection and review by the Chef;
- 3) Production of a 3D prototype of the creative proposal selected by the Chef. The prototype afterwards is sent to the Chef for testing and approval of format and measurement;
- 4) After approval, the porcelain piece is pre-produced and approved by the design team, the marketing and the Chef;
- 5) Once the piece has been approved, we move on to production and sale.

NOTE: this project is covered by a contract between the parties, which defines the obligations of each party as well as the royalties from the sale of the pieces.





Nelo Cassese
Brésil



Joachim Koerper
Portugal



Marco Stabile
Italie



Pedro Pena Bastos
Portugal



Diogo Rocha
Portugal



Hermanos Torres
Espagne



Benoit Sînthon
Portugal



Denis Perevoz
Russie



Jorge Rausch
Colombie



Roberta Sudbrack
Brésil



Rui Paula
Portugal



Justa Nobre
Portugal



Vitor Matos
Portugal



Juan Amador
Allemagne



Luis Filipe Souza
Brésil



Marco Zeffirino
Italie



Dieter Koschina
Portugal



Georges Blanc
France



Luís Baena
Portugal



Martha Ortiz
Mexique



Diego Guerrero
Espagne



Luís Pestana
Portugal



Michael Grünbacher
Allemagne



Hermanos Roca
Espagne



Ljubomir Stanisic
Portugal



Ricardo Costa
Portugal



Florentino
Nelo Cassese



Amonite
Joachim Koerper



Stabile
Marco Stabile



Wabi-Sabi
Pedro Pena Bastos



Serra
Diogo Rocha



Totem
Hermanos Torres



Espiral Gourmand
Benoit Sínthon



Lake
Denis Perevoz



Reef
Jorge Rausch



Simple
Roberta Sudbrack



Step
Rui Paula



Santola
Justa Nobre



Natura
Vitor Matos



Alma
Juan Amador



Fluctus
Luis Filipe Souza



Rotondo
Marco Zeffirino



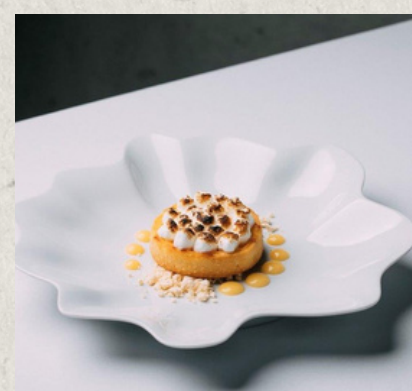
Seventy Nine
Dieter Koschina



Lara
Georges Blanc



Coral
Luís Baena



Flor Mistica
Martha Ortiz



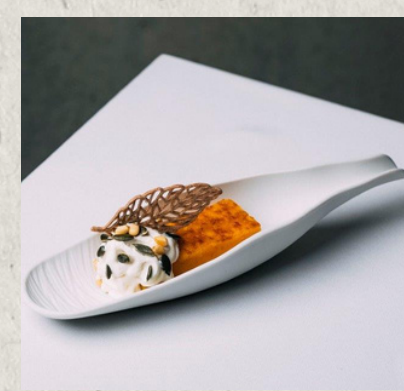
Naiz
Diego Guerrero



Bordado
Luís Pestana



Deltha
Michael Grünbacher



Bottle Leaf
Hermanos Roca



Egg
Ljubomir Stanisic



Atlantis
Ricardo Costa



FLORENTINO

by Chef Nelo Cassese

RESTAURANT CIPRIANI

✿ MICHELIN

BRAZIL



21142550
PLATE FLORENTINO



AMONITE

by Chef Joachim Koerper

RESTAURANT ELEVEN

✿ MICHELIN

LISBOA, PORTUGAL



21142710
PLATE AMONITE



STABILE

by Chef Marco Stabile

RESTAURANT ORA D'ARIA

 MICHELIN

ITALY



21143685
PLATE STABILE



WABI-SABI

by Chef Pedro Pena Bastos

RESTAURANT CURA

✿ MICHELIN

LISBOA, PORTUGAL



21144086
PLATE WABI-SABI



SERRA

by Chef Diogo Rocha

RESTAURANT MESA DE LEMOS

✿ MICHELIN

VISEU, PORTUGAL



21143686
PLATE SERRA



TOTEM

by Hermanos Torres

RESTAURANT COCINA HERMANOS TORRES

*** MICHELIN

SPAIN



21137749
PLATE TOTEM



ESPIRAL GOURMAND

by Chef Benoit Sînthon

RESTAURANT IL GALLO D'ORO

✿✿ MICHELIN

FUNCHAL, PORTUGAL



21117388
PLATE ESPIRAL GOURMAND



LAKE

by Chef Denis Perevoz

CAFE CHEKHOV

BOARD MEMBER OF THE MOSCOW CULINARY ASSOCIATION

RUSSIA



21122196
PLATE LAKE



REEF

by Chef Jorge Rausch

RESTAURANT CRITERION

ONE OF THE LATIN AMERICA'S 50 BEST RESTAURANTS

MASTERCHEF COLOMBIA JUDGE

COLOMBIA, SOUTH AMERICA



21138762
PLATE REEF



SIMPLE

by Chef Roberta Sudbrack

RESTAURANT SUD, O PÁSSARO VERDE

✿ MICHELIN

BRAZIL



21124344
PLATE SIMPLE



STEP

by Chef Rui Paula

CASA DE CHÁ DA BOA NOVA

✿✿ MICHELIN

DOURO, PORTUGAL



21142710
PLATE STEP



SANTOLA

by Chef Justa Nobre

RESTAURANT O NOBRE

“GUIA BOA CAMA BOA MESA” CAREER AWARD - 2023

MASTERCHEF PORTUGAL JUDGE

LISBOA, PORTUGAL



21133430
PLATE SANTOLA



NATURA

by Chef Vitor Matos

RESTAURANT ANTIQVVM

✿✿ MICHELIN

PORTO, PORTUGAL



21117284
PLATE NATURA GLAZE 33



21131072
PLATE SOBREMESA BISCUIT 25



21131073
PLATE SOPA GLAZE 29



21131071
PLATE SOBREMESA GLAZE 25



21117283
PLATE NATURA BISCUIT 33



ALMA

by Chef Juan Amador

RESTAURANT ALMA

✿ MICHELIN

SINGAPURA

RESTAURANT AMADOR

✿✿✿ MICHELIN

AUSTRIA



21135903
PLATE ALMA



FLUCTUS

by Chef Luis Filipe Souza

RESTAURANT EVVAI

✿ MICHELIN

BRAZIL



21137570
PLATE FLUCTUS GLAZE 31



21137571
PLATE FLUCTUS BISCUIT 31





ROTONDO

by Chef Zeffirino

RESTAURANT ZEFFIRINO

ITALY



21131073
PLATE ROTONDO



SEVENTY NINE

by Chef Dieter Koschina

RESTAURANT VILA JOYA

✿✿ MICHELIN

ALBUFEIRA, PORTUGAL



21114822
PLATE SEVENTY NINE



LARA

by Chef Georges Blanc

RESTAURANT GASTRONOMIQUE GEORGES BLANC

*** MICHELIN

FRANCE



21126592
PLATE LARA GLAZE



21126626
PLATE LARA BISCUIT





CORAL

by Chef Luis Baena

PORTUGAL



21124345
PLATE CORAL MATE 31



21123798
PLATE CORAL GLAZE 31





FLOR MISTICA

by Chef Martha Ortiz

RESTAURANT DULCE PATRIA

ONE OF THE LATIN AMERICA'S 50 BEST RESTAURANTS

MEXICO



21133587
PLATE FLOR MISTICA



NAIZ

by Chef Diego Guerrero

RESTAURANT DSTAGE

✿✿ MICHELIN

SPAIN



21123388
PLATE NAIZ MATE 30



21123388
PLATE NAIZ 30





BORDADO

by Chef Luís Pestana

RESTAURANT WILLIAM

✿ MICHELIN

MADEIRA, PORTUGAL



21135480
PLATE BORDADO



DELTHA

by Chef Michael Grünbacher

RESTAURANT LANDGASTHOF AM KÖNIGSWEG

GERMANY



21121057
PLATE DELTHA



BOTTLE LEAF

by Hermanos Roca

RESTAURANT EL CELLER DE CAN ROCA

*** MICHELIN

SPAIN



21133609
PLATE BOTTLE LEAF



EGG

by Chef Ljubomir Stanisic

RESTAURANT 100 MANEIRAS

 MICHELIN

LISBOA, PORTUGAL



21121593
PLATE EGG



ATLANTIS

by Chef Ricardo Costa

RESTAURANT THE YEATMAN

✿✿ MICHELIN

PORTO, PORTUGAL



21137570
PLATE ATLANTIS



SPECIFICATIONS

PLATE	CODE	WEIGHT	HEIGHT	LENGTH	WIDTH	DIAMETER	CAPACITY
Florentino	21142550	850gr 1 7/8lbs	71mm 2 4/5"			281mm 11"	
Amonite	21142710	1240gr 2 3/4lbs	25mm 1"			330mm 13"	
Stabile	21143685	840gr 1 6/7lbs	29mm 1 1/7"			280mm 11"	
Wabi-Sabi	21144086	495gr 1lbs	50mm 2"			220mm 8 2/3"	
Serra	21143686	595gr 1 1/3lbs	54mm 2"	279mm 11"			
Totem	21137749	1260gr 2 7/9lbs	54mm 2 1/8"			281mm 11 1/9"	
Espiral Gourmand	21117388	1158gr 2 5/9lbs	41mm 1 5/8"			319mm 12 5/9"	310ml 10 1/2 oz
Lake	21122196	960gr 2 1/9lbs	13mm 1/2"	260mm 10 1/4"			
Reef	21138762	440gr 1lbs	77mm 3"	194mm 7 5/8"	165mm 6 1/2"		
Simple	21124344	920gr 2lbs	28mm 1 1/9"			300mm 11 4/5"	
Step	21111653	904gr 2lbs	36mm 1 3/7"	326mm 12 5/6"	230mm 9"		
Santola	21133430	478gr 1lbs	64mm 2 1/2"	194mm 7 2/3"	78mm 3"		
Natura Glaze 33	21117284	1154gr 2 5/9lbs	14mm 5/9"			331mm 13"	
Dessert Biscuit 25	21131072	545gr 1 1/5lbs	15mm 3/5"			250mm 9 5/6"	
Soup Glaze 29	21133430	770gr 1 5/7lbs	61mm 2 2/5"			285mm 11 2/9"	
Dessert Glaze 25	21131071	545gr 1 1/5lbs	15mm 3/5"			250mm 9 5/6"	
Natura Biscuit 33	21117283	1111gr 2 4/9lbs	16mm 5/8"			330mm 13"	
Alma	21135903	805gr 1 7/9lbs	75mm 3"	269mm 10 3/5"	256mm 10 1/9"		



SPECIFICATIONS

PLATE	CODE	WEIGHT	HEIGHT	LENGTH	WIDTH	DIAMETER	CAPACITY
Fluctus Glaze 31	21137570	1109gr 2 4/9lbs	16mm 5/8"			308mm 12 1/8"	
Fluctus Biscuit 31	21137571	1052gr 2 1/3lbs	16mm 5/8"			308mm 12 1/8"	
Rotondo	21116371	1201gr 2 2/3lbs	47mm 1 6/7"			304mm 12"	425ml 14 3/8 oz
Seventy Nine	21114822	624gr 1 3/8lbs	20mm 7/9"	355mm 14"	150mm 6"		
Lara Glaze	21126592	947gr 2 1/9lbs	23mm 8/9"			297mm 11 2/3"	
Lara Biscuit	21126626	924gr 2lbs	23mm 8/9"			297mm 11 5/7"	
Coral Mate 31	21124345	860gr 1 8/9lbs	52mm 2"			311mm 12 1/4"	550ml 18 3/5 oz
Coral Gaze 31	21123798	860gr 1 8/9lbs	52mm 2"			311mm 12 1/4"	550ml 18 3/5 oz
Flor Mistica	21133587	810gr 1 4/5lbs	38mm 1 1/2"			300mm 11 4/5"	
Naiz Mate 30	21123388	793gr 1 3/4lbs	36mm 1 3/7"			292mm 11 1/2"	
Naiz 30	21122058	793gr 1 3/4lbs	36mm 1 3/7"			292mm 11 1/2"	
Bordado	21135480	940gr 2lbs	21mm 5/6"			310mm 11 4/5"	
Deltha	21121057	816gr 1 3/4lbs	39mm 1 1/2"			290mm 11 3/7"	233ml 7 7/8"
Bottle Leaf	21133609	226gr 1/2lbs	43mm 1 2/3"	276mm 10 6/7"	78mm 3"		
Egg	21121593	576gr 1 2/7lbs	142mm 5 3/5"			142mm 5 3/5"	24ml 4/5 oz
Atlantis	21137570	889gr 2lbs	51mm 2"	316mm 12 4/9"	249mm 9 4/5"		350ml 11 5/6 oz



CONTACTS

Vista Alegre

Lugar da Vista Alegre

3830-292 Ílhavo

Portugal

Tel.: +351 234 320 600

(National landline call)

geral@vistaalegre.com

vistaalegre.com

Showrooms

Lisboa

Av. João Crisóstomo, nº17, 1050-191 Lisboa

M. +351 926 881 782 / 967 264 469

Ílhavo

Lugar da Vista Alegre

3830-292 Ílhavo – Portugal

Tel. +351 234 320 600

Funchal

Rua do Jasmineiro, 24 e 26

Edifício Costa do Sol VIII

9000-013 Funchal

Tel. +351 967 037 626

Paris

42 Boulevard du Temple

75011 Paris

Tel. +33 1 47 00 07 62

+33 7 84 34 73 23

Hotelware Comercial

Portugal

Tel.: +351 707 246 835

(National landline call)

hotelware@vistaalegre.com

hotelware.vistaalegre.com

Marketing Vista Alegre

Tel.: +351 234 320 600

(National landline call)

Fax: +351 234 320 793

marketing@vistaalegre.com

Customer Support

Tel.: +351 234 320 600

(National landline call)

Fax: +351 234 320 783

sac@vistaalegre.com

servicocliente.vistaalegre.com

Vista Alegre France

42 Boulevard du Temple

75011 Paris

Tel.: +33 6 30 37 44 96

+33 1 47 00 07 62

france@vistaalegre.com

Vista Alegre USA

Trade Showroom:

41 Madison Ave – 9th floor

New York, NY 10010

Toll free: +1 (888) 653-0108

Direct local: +1 (917) 831-4377

Fax: +1 (917) 831-4466

usa@vistaalegre.com

Warehouse:

Luxe-Ops Inc.

16 Chapin Road, Suite 908

Pine Brook, NJ 07058

Vista Alegre Spain

Commercial Department SPAIN

Calle de Claudio Coello, 53

28001 Madrid

Tel.: +34 914 026 722

Fax: +34 914 027 476

espana@vistaalegre.com

Vista Alegre Mexico

Avenida Homero, 526

Piso 2 - Despacho 202

Colonia Polanco, Del. Miguel

Hidalgo

C.P. 11560, Ciudad de México

Tel.: +52 55 5244 5809

+52 55 5244 5810

mexico@vistaalegre.com

Vista Alegre Mozambique

Commercial Department MOZAMBIQUE

Maputo

Av. Kenneth Kuanda

nº 403, R/C Sommerchild - Maputo

Tel.: +258 21 480 580

mocambique@vistaalegre.com

Vista Alegre Brazil

Commercial Department BRAZIL

São Paulo

Rua Bandeira Paulista, 726 - 6º andar

Itaim Bibi, São Paulo - SP

CEP: 04532-002

Tel.: +55 11 2679 4881

+55 11 3081-1921

brasil@vistaalegre.com

HOTELWARE.VISTAALLEGRE.COM